

Drives – Control Units – Visualisation

Our customers receive all the mechanical and electrical components for their tailored coating and laminating machines from one source. A “Centre of Competence” for all the needs of a coating and laminating operation.

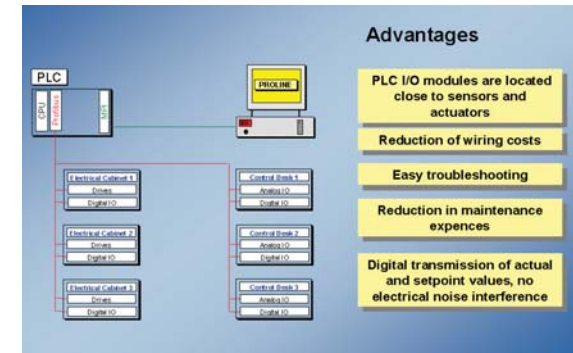
Environmentally friendly, ultra efficient and quick to react, electric and electronic solutions replace and complement – where this is sensible – pneumatic and hydraulic system controls.

Incorporating Siemens hardware for drives and stored-program controls (PLC), we develop, design and build all the drive systems. Our own engineers put the system into operation on site and are also the point of contact for maintenance queries, updates and speedy service via Teleline.

A repeatable modular design for the drive and control concepts guarantees safety, rapid fault diagnosis and assistance. The time necessary for maintenance is also considerably reduced.

Intelligent bus systems

No more complex cabling, but intelligent bus systems connect the drive system with SPC and the visualisation system. Those with practical experience of long and difficult searches for electrical faults know the value of our solution.

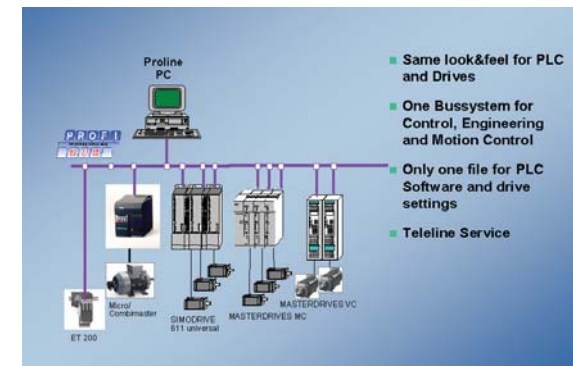


Intelligent bus systems replace cabling

Individual system from the same source



High-speed varnishing machine for 1,200 m/min.

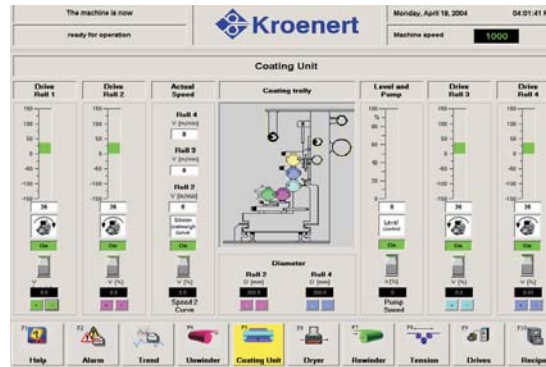


Basic construction for the drive and control of the varnishing system

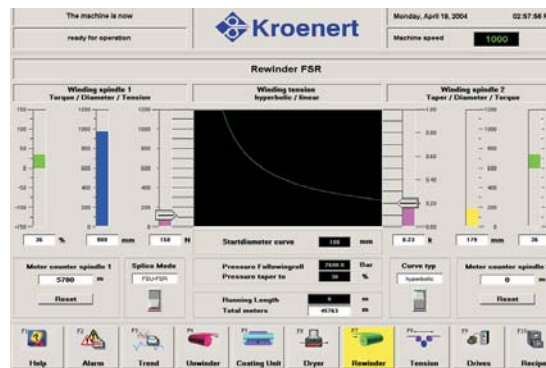
Proline system

Based on Microsoft Visual Basic.NET, we incorporate the "Proline" visualisation system as standard. Proline represents the development of a visualisation system which is tailor-made for coating and laminating machines, but which can also be adapted to the customers' individual requirements due to its flexible construction. Proline incorporates many advantages:

- easy to use menus
- fully integrated graphical interface
- dynamic display of trends
- display and input of process variables and machine set-up
- recipes with automatic machine adjustment (Proline)
- data logging system for generating roll reports or error message listing
- alarm system
- open system, based on Microsoft Visual Basic.NET
- system adjustments for maintenance
- utilisation of standard hardware (PC)



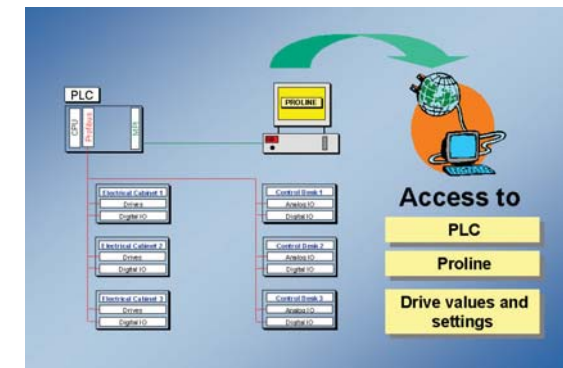
Many variations but still clearly structured for rapid adjustments



Winder settings including taper tension are available for the operator without restriction

Teleline system

Proline also enables access to the Teleline service via the Internet. This is an alternative which diagnoses and, as a general rule, enables problems to be solved quickly without time-consuming journeys. The result is that the coating and laminating machines remain available and productive.



Teleline service concept